

# Greenduct™



**Products are up to  
175% more thermal  
efficient than our  
standard flexible duct**

The marginal additional cost of Greenduct™ in comparison to the total cost of a new ducted system can pay for itself again and again via reduced running costs over the life of the system.

## Other features of Greenduct™ include:

- Reduces energy usage
- Reduces greenhouse emissions
- Reduces running costs year after year
- Achieves desired home comfort levels faster
- Reduces heating / cooling unit operating times prolonging unit life
- Made in Australia
- 10 year product warranty



[westaflex.com.au](http://westaflex.com.au)



NATIONAL  
DISTRIBUTOR

# Greenduct™

○ R<sup>M</sup>1.25



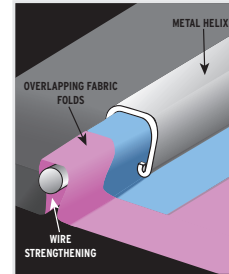
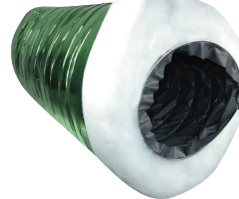
○ R<sup>M</sup>1.5



○ R<sup>M</sup>2.0



○ R<sup>M</sup>2.4



## ○ WHAT IS FLEXIBLE DUCT AND HOW DOES IT WORK?

Flexible ducts are the hidden tubes that snake around roof spaces or below floors that deliver air from heating and or cooling units to air outlets throughout thousands and thousands of Australian homes.

When you consider flexible duct is 97% of the air delivery system of your heating/cooling system, as much thought should go into which duct you buy as to which heating and or cooling unit you buy.

## ○ GREENDUCT™ IS DIFFERENT TO ALL OTHER FLEXIBLE DUCTS

**GREENDUCT™** is a mechanically locked duct made a 100um thick low density fire resistant polyethylene (Similar to black builders plastic) being mechanically pressed together by a steel clamping rib over a spirally wound stiffening wire that locks all the components together to form a continuous tube or duct.

The Mechanically Locked Flexible Duct core of **GREENDUCT™** is called "Unilok" and has won an Australian Design Mark and a Consensus Manufacturing Award for its innovative design and inherent inbuilt strength. The steel clamping rib acts like an external skeleton that maintains the correct internal duct diameter even on the tightest bends, unlike glued ducts.

### TECHNICAL SPECIFICATIONS

Metric Size (mm)	150	200	250	300	350	400	450	500	550	600
Imperial Size (")	6"	8"	10"	12"	14"	16"	18"	20"	22"	24"
3m Length / R <sup>M</sup> 1.25	•	•	•	•	•	•	•	•	•	•
6m Length / R <sup>M</sup> 1.25	•	•	•	•	•	•	•	•		
3m Length / R <sup>M</sup> 1.5	•	•	•	•	•	•	•			
6m Length / R <sup>M</sup> 1.5	•	•	•	•	•	•	•			
3m Length / R <sup>M</sup> 2.0	•	•	•	•	•	•	•			
6m Length / R <sup>M</sup> 2.0	•	•	•	•	•	•	•			
3m Length / R <sup>M</sup> 2.5	•	•	•	•	•	•	•			

Compliance - Test Reports **GREENDUCT™** has been tested to, or complies with the following standards.

Tests Passed	Complies
Australian Standard (AS)-4254	Yes
Australian Standard (AS)-1530 part 3	Yes
Thermal Standard (AS)-4859.1	Yes



For your nearest  
Westaflex / Uniflex outlet email  
sales@westaflex.com.au  
or visit [www.westaflex.com.au](http://www.westaflex.com.au)



# Emission Test Certificate

Monday, October 08<sup>th</sup> 2018

Supplier: Westaflex Aust Pty Ltd (140-162 Bamfield Road, Heidelberg West, VIC, 3081)

Sample Description: Greenduct With Polyfibre Insulation

Date Tested: September 2018 (Tested by FORAY Laboratories – NATA Accreditation 1231)

Test Method: ASTM D5116 “Standard Guide for Small-Scale Environmental Chamber Determinations of Organic Emissions from Indoor Material/Products”.

Emission Data (24 hrs):

<b>Green Building Council of Australia Green Star Office Design v3 IEQ-13</b>	<b>Greenduct With Polyfibre Insulation</b>
Total Volatile Organic Compound Emission Rate limit <0.5mg/m <sup>2</sup> /hr	Total Volatile Organic Compound Emission Rate: 0.010 mg/m <sup>2</sup> /hr



Dr. Vyt Garnys  
PhD, BSc(Hons) AIMM, ARACI, ISIAQ  
ACA, AIRAH, FMA  
Managing Director and Principal Consultant



Tuan Duong  
BEng (Chemical Engineer)  
Laboratory Technician

CV180986